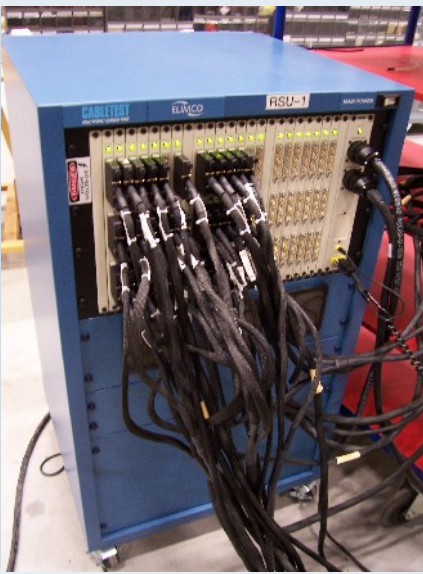


Electrical Tester Automatic Test Bench

Test System



This Functional Automatic Test System allows to check Electrical System on its totality, with continuity, insulation and high voltage test, in a Single Test Sequence.

As soon as all the points were connected, Elimco's Electrical Test System can test a point in few milliseconds of way automatic. The System has a powerful software which allows the command of the integrated equipment, together or one by one. It can be used as multimeter, and can give information of resistance, amperage and voltage of each point and the rest.

It is connected with the aircraft by harnesses manufactured for this purpose.

➤ Client / Programmes Supplied

EUROCOPTER FAL:
EC-135

➤ Tested Systems

All the helicopter's electrics systems

Testing capacity: 16000 points

➤ Main Features

2 Axis mobile system.

Modular, robust, easy maintenance and update. Built in test possibility.

Bonding, Continuity, Insulation Resistance and Voltage Strength (500 & 1000 Vdc) Test.

Automatic Test point to point and point to multipoint

Easy HMI to operator. Advanced software for shaping tests.

Detailed test report.

Plug&Play connections of new test points with new boards.

